

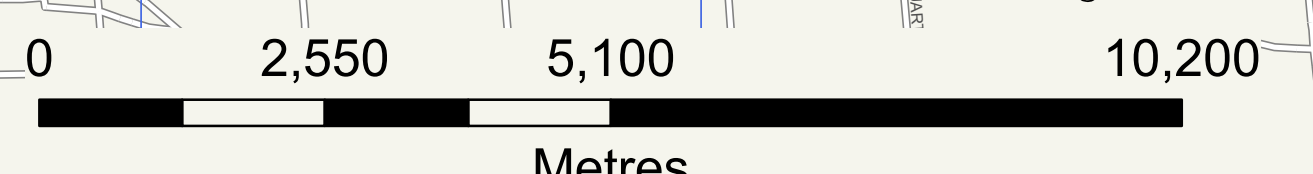
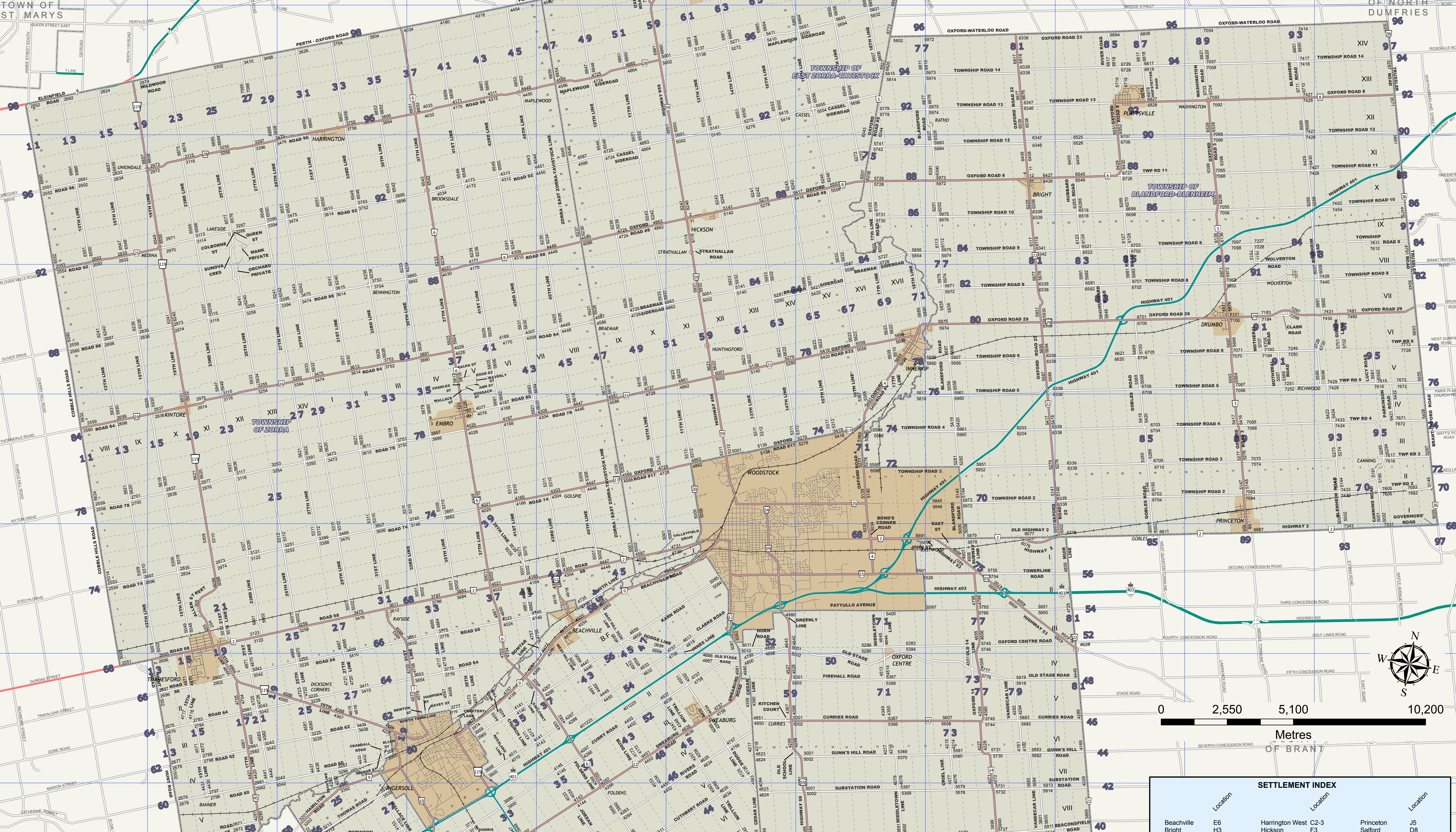
COUNTY OF OXFORD

CITY OF CHENER

TOWNSHIP OF PERTH-EAST

TOWNSHIP OF PERTH SOUTH

TOWNSHIP OF NORTH DUMFRIES



- Municipal Limit
- County Road
- Provincial Highway
- Township Road
- Other Road
- Railroad
- Township Lot Line
- Settlement Boundary
- Built-Up Area

SETTLEMENT INDEX			
Location	Location	Location	Location
Beachville E6	Harrington West C2-3	Princeton J5	
Bright H3	Hickson F3	Salford D8	
Brownsville D11	Innervick G4	Springford G11	
Burgessville G8	Mount Elgin E9	Swaburg F7	
Caledonia D11	Norwich H9	Tavistock F1	
Drumbo J4	Otterville H11	Trifford B6-7	
Embro D5	Plattsville I2	Wolverton J4	

ROAD INDEX			
10R LINE E-EE F6	GOVERNORS ROAD K6	PERTH OXFORD ROAD B2, C2, D2, E1	
10S LINE E-EE F6	GREEN LINE F8	PERTH OXFORD ROAD B2, C2, D2, E1	
13R LINE A2-A4, B4-B7, F1-F5	GUNN'S HILL ROAD F7, G7, H7, I7	POCK LINE F7, G7, H7, I7	
14R LINE F1-F5	HANES STREET C7-C9	PITCOCK PARK ROAD F7, G7, H7, I7	
15R LINE A2-A4, B4-B8, F1-F5, G2-G5	HAMILTON ROAD C7-C9	PLANK LINE C7-C9	
16R LINE F1-F5	HAMILTON STREET C7-C9	PLANT VALLEY ROAD D8, E8, F8, G8	
17R LINE A2-A4, B4-B8, F1-F5, G2-G5	HAMILTON STREET C7-C9	POTTERS ROAD B10	
18R LINE A2-A4, B4-B8, F1-F5, G2-G5	HAMILTON STREET C7-C9	PRESEY ROAD C10, D10, E10, F10	
21R LINE B6-B7	HATCHERY ROAD C12, D11, D12, E1	PRESEY ROAD C10, D10, E10, F10	
23R LINE C2-C8	HIGHWAY 403 E-EE F6, G6, H6, I6, J6, K6	QUARTER TOWN LINE E11	
25R LINE C2-C8	HIGHWAY 403 E-EE F6, G6, H6, I6, J6, K6	QUARTER TOWN LINE E11	
26R LINE C2-C8	HIGHWAY 403 E-EE F6, G6, H6, I6, J6, K6	QUARTER TOWN LINE E11	
27R LINE C2-C8	HIGHWAY 403 E-EE F6, G6, H6, I6, J6, K6	QUARTER TOWN LINE E11	
28R LINE C2-C8	HIGHWAY 403 E-EE F6, G6, H6, I6, J6, K6	QUARTER TOWN LINE E11	
29R LINE C2-C8	HIGHWAY 403 E-EE F6, G6, H6, I6, J6, K6	QUARTER TOWN LINE E11	
30R LINE C2-C8	HIGHWAY 403 E-EE F6, G6, H6, I6, J6, K6	QUARTER TOWN LINE E11	
31R LINE C2-C8	HIGHWAY 403 E-EE F6, G6, H6, I6, J6, K6	QUARTER TOWN LINE E11	
32R LINE C2-C8	HIGHWAY 403 E-EE F6, G6, H6, I6, J6, K6	QUARTER TOWN LINE E11	
33R LINE C2-C8	HIGHWAY 403 E-EE F6, G6, H6, I6, J6, K6	QUARTER TOWN LINE E11	
34R LINE C2-C8	HIGHWAY 403 E-EE F6, G6, H6, I6, J6, K6	QUARTER TOWN LINE E11	
35R LINE C2-C8	HIGHWAY 403 E-EE F6, G6, H6, I6, J6, K6	QUARTER TOWN LINE E11	
36R LINE C2-C8	HIGHWAY 403 E-EE F6, G6, H6, I6, J6, K6	QUARTER TOWN LINE E11	
37R LINE C2-C8	HIGHWAY 403 E-EE F6, G6, H6, I6, J6, K6	QUARTER TOWN LINE E11	
38R LINE C2-C8	HIGHWAY 403 E-EE F6, G6, H6, I6, J6, K6	QUARTER TOWN LINE E11	
39R LINE C2-C8	HIGHWAY 403 E-EE F6, G6, H6, I6, J6, K6	QUARTER TOWN LINE E11	
40R LINE C2-C8	HIGHWAY 403 E-EE F6, G6, H6, I6, J6, K6	QUARTER TOWN LINE E11	
41R LINE C2-C8	HIGHWAY 403 E-EE F6, G6, H6, I6, J6, K6	QUARTER TOWN LINE E11	
42R LINE C2-C8	HIGHWAY 403 E-EE F6, G6, H6, I6, J6, K6	QUARTER TOWN LINE E11	
43R LINE C2-C8	HIGHWAY 403 E-EE F6, G6, H6, I6, J6, K6	QUARTER TOWN LINE E11	
44R LINE C2-C8	HIGHWAY 403 E-EE F6, G6, H6, I6, J6, K6	QUARTER TOWN LINE E11	
45R LINE C2-C8	HIGHWAY 403 E-EE F6, G6, H6, I6, J6, K6	QUARTER TOWN LINE E11	
46R LINE C2-C8	HIGHWAY 403 E-EE F6, G6, H6, I6, J6, K6	QUARTER TOWN LINE E11	
47R LINE C2-C8	HIGHWAY 403 E-EE F6, G6, H6, I6, J6, K6	QUARTER TOWN LINE E11	
48R LINE C2-C8	HIGHWAY 403 E-EE F6, G6, H6, I6, J6, K6	QUARTER TOWN LINE E11	
49R LINE C2-C8	HIGHWAY 403 E-EE F6, G6, H6, I6, J6, K6	QUARTER TOWN LINE E11	
50R LINE C2-C8	HIGHWAY 403 E-EE F6, G6, H6, I6, J6, K6	QUARTER TOWN LINE E11	
51R LINE C2-C8	HIGHWAY 403 E-EE F6, G6, H6, I6, J6, K6	QUARTER TOWN LINE E11	
52R LINE C2-C8	HIGHWAY 403 E-EE F6, G6, H6, I6, J6, K6	QUARTER TOWN LINE E11	
53R LINE C2-C8	HIGHWAY 403 E-EE F6, G6, H6, I6, J6, K6	QUARTER TOWN LINE E11	
54R LINE C2-C8	HIGHWAY 403 E-EE F6, G6, H6, I6, J6, K6	QUARTER TOWN LINE E11	
55R LINE C2-C8	HIGHWAY 403 E-EE F6, G6, H6, I6, J6, K6	QUARTER TOWN LINE E11	
56R LINE C2-C8	HIGHWAY 403 E-EE F6, G6, H6, I6, J6, K6	QUARTER TOWN LINE E11	
57R LINE C2-C8	HIGHWAY 403 E-EE F6, G6, H6, I6, J6, K6	QUARTER TOWN LINE E11	
58R LINE C2-C8	HIGHWAY 403 E-EE F6, G6, H6, I6, J6, K6	QUARTER TOWN LINE E11	
59R LINE C2-C8	HIGHWAY 403 E-EE F6, G6, H6, I6, J6, K6	QUARTER TOWN LINE E11	
60R LINE C2-C8	HIGHWAY 403 E-EE F6, G6, H6, I6, J6, K6	QUARTER TOWN LINE E11	
61R LINE C2-C8	HIGHWAY 403 E-EE F6, G6, H6, I6, J6, K6	QUARTER TOWN LINE E11	
62R LINE C2-C8	HIGHWAY 403 E-EE F6, G6, H6, I6, J6, K6	QUARTER TOWN LINE E11	
63R LINE C2-C8	HIGHWAY 403 E-EE F6, G6, H6, I6, J6, K6	QUARTER TOWN LINE E11	
64R LINE C2-C8	HIGHWAY 403 E-EE F6, G6, H6, I6, J6, K6	QUARTER TOWN LINE E11	
65R LINE C2-C8	HIGHWAY 403 E-EE F6, G6, H6, I6, J6, K6	QUARTER TOWN LINE E11	
66R LINE C2-C8	HIGHWAY 403 E-EE F6, G6, H6, I6, J6, K6	QUARTER TOWN LINE E11	
67R LINE C2-C8	HIGHWAY 403 E-EE F6, G6, H6, I6, J6, K6	QUARTER TOWN LINE E11	
68R LINE C2-C8	HIGHWAY 403 E-EE F6, G6, H6, I6, J6, K6	QUARTER TOWN LINE E11	
69R LINE C2-C8	HIGHWAY 403 E-EE F6, G6, H6, I6, J6, K6	QUARTER TOWN LINE E11	
70R LINE C2-C8	HIGHWAY 403 E-EE F6, G6, H6, I6, J6, K6	QUARTER TOWN LINE E11	
71R LINE C2-C8	HIGHWAY 403 E-EE F6, G6, H6, I6, J6, K6	QUARTER TOWN LINE E11	
72R LINE C2-C8	HIGHWAY 403 E-EE F6, G6, H6, I6, J6, K6	QUARTER TOWN LINE E11	
73R LINE C2-C8	HIGHWAY 403 E-EE F6, G6, H6, I6, J6, K6	QUARTER TOWN LINE E11	
74R LINE C2-C8	HIGHWAY 403 E-EE F6, G6, H6, I6, J6, K6	QUARTER TOWN LINE E11	
75R LINE C2-C8	HIGHWAY 403 E-EE F6, G6, H6, I6, J6, K6	QUARTER TOWN LINE E11	
76R LINE C2-C8	HIGHWAY 403 E-EE F6, G6, H6, I6, J6, K6	QUARTER TOWN LINE E11	
77R LINE C2-C8	HIGHWAY 403 E-EE F6, G6, H6, I6, J6, K6	QUARTER TOWN LINE E11	
78R LINE C2-C8	HIGHWAY 403 E-EE F6, G6, H6, I6, J6, K6	QUARTER TOWN LINE E11	
79R LINE C2-C8	HIGHWAY 403 E-EE F6, G6, H6, I6, J6, K6	QUARTER TOWN LINE E11	
80R LINE C2-C8	HIGHWAY 403 E-EE F6, G6, H6, I6, J6, K6	QUARTER TOWN LINE E11	
81R LINE C2-C8	HIGHWAY 403 E-EE F6, G6, H6, I6, J6, K6	QUARTER TOWN LINE E11	
82R LINE C2-C8	HIGHWAY 403 E-EE F6, G6, H6, I6, J6, K6	QUARTER TOWN LINE E11	
83R LINE C2-C8	HIGHWAY 403 E-EE F6, G6, H6, I6, J6, K6	QUARTER TOWN LINE E11	
84R LINE C2-C8	HIGHWAY 403 E-EE F6, G6, H6, I6, J6, K6	QUARTER TOWN LINE E11	
85R LINE C2-C8	HIGHWAY 403 E-EE F6, G6, H6, I6, J6, K6	QUARTER TOWN LINE E11	
86R LINE C2-C8	HIGHWAY 403 E-EE F6, G6, H6, I6, J6, K6	QUARTER TOWN LINE E11	
87R LINE C2-C8	HIGHWAY 403 E-EE F6, G6, H6, I6, J6, K6	QUARTER TOWN LINE E11	
88R LINE C2-C8	HIGHWAY 403 E-EE F6, G6, H6, I6, J6, K6	QUARTER TOWN LINE E11	
89R LINE C2-C8	HIGHWAY 403 E-EE F6, G6, H6, I6, J6, K6	QUARTER TOWN LINE E11	
90R LINE C2-C8	HIGHWAY 403 E-EE F6, G6, H6, I6, J6, K6	QUARTER TOWN LINE E11	
91R LINE C2-C8	HIGHWAY 403 E-EE F6, G6, H6, I6, J6, K6	QUARTER TOWN LINE E11	
92R LINE C2-C8	HIGHWAY 403 E-EE F6, G6, H6, I6, J6, K6	QUARTER TOWN LINE E11	
93R LINE C2-C8	HIGHWAY 403 E-EE F6, G6, H6, I6, J6, K6	QUARTER TOWN LINE E11	
94R LINE C2-C8	HIGHWAY 403 E-EE F6, G6, H6, I6, J6, K6	QUARTER TOWN LINE E11	
95R LINE C2-C8	HIGHWAY 403 E-EE F6, G6, H6, I6, J6, K6	QUARTER TOWN LINE E11	
96R LINE C2-C8	HIGHWAY 403 E-EE F6, G6, H6, I6, J6, K6	QUARTER TOWN LINE E11	
97R LINE C2-C8	HIGHWAY 403 E-EE F6, G6, H6, I6, J6, K6	QUARTER TOWN LINE E11	
98R LINE C2-C8	HIGHWAY 403 E-EE F6, G6, H6, I6, J6, K6	QUARTER TOWN LINE E11	
99R LINE C2-C8	HIGHWAY 403 E-EE F6, G6, H6, I6, J6, K6	QUARTER TOWN LINE E11	
100R LINE C2-C8	HIGHWAY 403 E-EE F6, G6, H6, I6, J6, K6	QUARTER TOWN LINE E11	

NOTES: (1) UNDERSTANDING THE 6-DIGIT CIVIC ADDRESS (IE. 223531 OSTRANDER ROAD)

83 2955 OSTRANDER ROAD

ROAD NAME

FRONTAGE INTERVAL
- Increases by (1) number every ten (10) metres
- On a north-south road, the frontage interval increases as you travel from south to north with Highway No. 2 being 5000
- On an east-west road, the frontage interval increases as you travel from west to east with Highway No. 59
- If the number is odd, the property is on the north or west side of the road. If the number is even, the property is on the south or east side of the road

ROAD IDENTIFICATION NUMBER
- Shown in blue on the County Road Map
- If this number is odd, the road runs north/south. If the number is even, the road runs east-west.

(2) PRODUCED BY THE COUNTY OF OXFORD USING DATA UNDER LICENSE FROM THE UPPER THAMES RIVER, GRAND RIVER, LONG POINT REGION AND C ATFISH CREEK CONSERVATION AUTHORITIES, TERANET ENTERPRISES INC., AND THE PROVINCE OF ONTARIO, Copyright 2006